

GREAT DECISIONS LECTURE SERIES

EVERY WEDNESDAY FROM
FEBRUARY 7, 2024
- **MARCH 27, 2024**

11:00 A.M.
- **12:30 P.M.**

AT KIRKLAND VILLAGE
1 KIRKLAND VILLAGE CIRCLE
BETHLEHEM, PA 18017

The Great Decisions Lecture Series seeks to educate the community about vitally important issues relating to American foreign policy. Join the conversation and engage with top scholars on today's most pressing global topics.

2024 GREAT DECISIONS LECTURE SERIES TOPICS WILL INCLUDE:



**Mideast
Alignment**



**Climate
Technology &
Competition**



**Science
Across Borders**



**U.S.-China
Trade Policy**



**NATO'S
Future**



**Understanding
Indonesia**



**High Seas
Treaty**



**Pandemic
Preparedness**



ABOUT FOREIGN POLICY ASSOCIATION:

The Foreign Policy Association (FPA), an independent, non-governmental organization promoting informed public opinion on U.S. foreign policy and global affairs. The FPA is the oldest and largest grassroots, educational program on world affairs, reaching 880 cities and 350,000 members. The FPA is based in New York City. FPA experts write articles about the most critical issues facing America each year to be included in the Great Decisions Briefing Book. This book is included with registration and will be distributed to registrants.

REGISTRATION:

(610) 867-4699

www.ywcabethlehem.org

Scan QR Code



RATES:

Early Registration (save \$10)
(available until 12/1/2023)

Individual*: \$90.00

Couple*: \$125.00

Registration After 12/1/23

Individual*: \$100.00

Couple*: \$135.00

Single Lecture Walk-In: \$20.00
(no briefing book included)

*includes 1 Briefing Book (value of \$35)

PROCEEDS RAISED
WILL SUPPORT THE
PROGRAMS & SERVICES OF
YWCA BETHLEHEM

eliminating racism
empowering women
ywca
Bethlehem

The YWCA of Bethlehem is a non-profit organization registered with the Pennsylvania Bureau of Charitable Organizations. A copy of the official registration and financial information may be obtained from the PA Department of State by calling 1-800-732-0999 toll-free within Pennsylvania. Registration does not imply endorsement. YWCA Bethlehem Offices, 3895 Adler Place, Bldg. A, Suite 180, Bethlehem, PA 18017 T: 610-867-4669 F: 610-997-3786 www.ywcabethlehem.org. All contributions are tax deductible to the fullest extent allowable by the IRS.

YWCA IS ON A MISSION



MIDEAST REALIGNMENT

The United States and Middle East are at a crossroads. In spite of a reduced presence in the Middle East, the U.S. still has significant national interests there and the area is a key arena for global power politics. Can the U.S. continue to defend its interests in the Middle East and globally with a lower level of military and political involvement, or should it recommit to a leading role in the region?



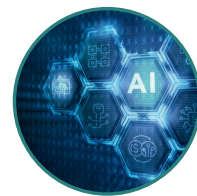
CLIMATE TECHNOLOGY & COMPETITION

Will the United States and China, with other powerful countries following suit, approach current and future climate initiatives with an increased commitment to trade protectionism and nationalism, by various measures including trade restrictions? Or could a growing spirit of international accord develop to confront the “common enemy” of climate change?



SCIENCE ACROSS BORDERS

Scientific advances benefit from collaboration between researchers, but what happens when material, such as Artificial Intelligence (AI) is controversial and important to a nation’s national security? Is there a middle ground between sharing information and denying access? How can we regulate cooperation?



U.S.-CHINA TRADE RIVALRY

China’s economic rise and its current policies of increasing the role of the state in the economy have led some U.S. policymakers to seek to deny China access to U.S. technology and investment. This is seen as a necessary corrective to decades of predatory Chinese economic policies. Is this a wise strategy, and how effective can it be?



NATO’S FUTURE

Since the Russian invasion of Ukraine in February 2022, the North Atlantic Treaty Organization (NATO) has come under increased scrutiny, not because NATO troops are involved in the conflict, but because of its role in relations between Russia and its neighbors. Will expanding membership in NATO protect countries, or will it further provoke Russia?



UNDERSTANDING INDONESIA

Despite its large size, Indonesia remains virtually invisible to most Americans. But as one of the world’s largest democracies, the world’s largest Muslim-majority nation, and as an economic driver of ASEAN, why does it fly below the radar? What are current issues in U.S.-Indonesian relations, and what role can the country play in Asia?



HIGH SEAS TREATY

Areas of the seas beyond national jurisdiction comprise the high seas, which are facing a degradation of ecosystems due to climate change and the increase in human activities, such as shipping, overfishing, pollution, and deep-sea mining. The recently negotiated High Seas Treaty, also known as the Biodiversity Beyond National Jurisdiction treaty, will attempt to address these issues. How difficult will it be to convince nations to participate?



PANDEMIC PREPAREDNESS

Looking back at the COVID-19 pandemic, there are many lessons to take away in terms of domestic and international policies. Although this pandemic seems to have waned, how can we apply these lessons to future pandemics? Will countries cooperate, and will a consensus emerge on how to manage global health challenges?

